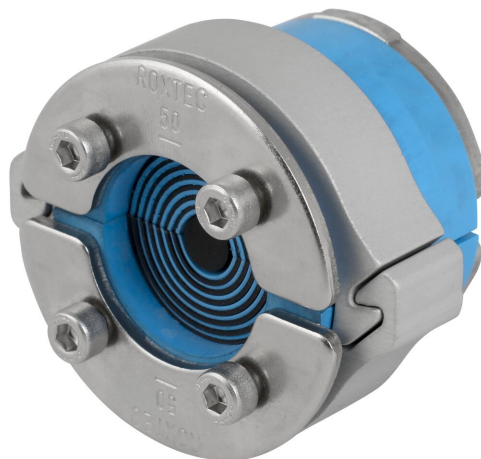




sistema di sigillatura Roxtec C RS SLO

Guarnizione rotonda per ottimizzare spazio e peso.

Roxtec C RS SLO è una soluzione di sigillatura leggera ma molto resistente per ingressi singoli di cavi e tubi in armadi, involucri e apparecchiature. Fornendo ingresso e protezione dal fuoco, nonché fissaggio dei cavi a prova di vibrazioni, è ideale per i settori della mobilità come il materiale rotabile. La soluzione è composta da una sigillatura adattabile Roxtec C RS e da un manicotto Roxtec C SLO. È disponibile in quattro diverse misure per coprire cavi e tubi da 4 a 54 mm.



- Leggero
- Compatto
- Consente la sigillatura di cavi precablati
- Apribile

Caratteristiche



Resistenza al fuoco



IP/UL NEMA

Struttura dell'installazione



Armadi e quadri

Ratings e certificati

Fuoco

- Classificazione E/EI secondo EN 45545 E30

Tenuta

- IP 66

Dati relativi ai componenti

Componenti per la sigillatura



Sistema di sigillatura C RS SLO

Per informazioni dettagliate, visita la pagina [roxtec.com](https://www.roxtec.com).



Kit pre-configurati

mm/kg



C RS SLO 43 ALU



C RS SLO 50 ALU



C RS SLO 68 ALU



C RS SLO 75 ALU

Titolo	Configurazione	Dimensioni apertura Ø	Peso	Art. Nr.
C RS SLO 43 ALU	1x (4.0-23.0)	44 - 46	0.25	234690
C RS SLO 50 ALU	1x (8.0-30.0)	51 - 53	0.29	234691
C RS SLO 68 ALU	1x (26.0-48.0)	69 - 71	0.43	234692
C RS SLO 75 ALU	1x (24.0-54.0)	76 - 78	0.5	234694

The product information provided by Roxtec does not release the purchaser of the Roxtec system, or part thereof, from the obligation to independently determine the suitability of the products for the intended process, installation and/or use.

Roxtec gives no guarantee for the Roxtec system or any part thereof and assumes no liability for any loss or damage whatsoever, whether direct, indirect, consequential, loss of profit or otherwise, occurred or caused by the Roxtec systems or installations containing components not manufactured by an authorized manufacturer and/or occurred or caused by the use of the Roxtec system in a manner or for an application other than for which the Roxtec system was designed or intended.

Roxtec expressly excludes any implied warranties of merchantability and fitness for a particular purpose and all other express or implied representations and warranties provided by statute or common law. User determines suitability of the Roxtec system for intended use and assumes all risk and liability in connection therewith. In no event shall Roxtec be liable for indirect, consequential, punitive, special, exemplary or incidental damages or losses.

The Roxtec products are offered and sold in accordance with the conditions of the Roxtec General Terms of Sales. The latest version of the Roxtec General Terms of Sales can be downloaded from <https://www.roxtec.com/en/about-us/about-roxtec/general-terms-of-sales/>

We reserve the right to make changes to the product and technical information without further notice. Any errors in print or entry are no claims for indemnity. The content of this publication is the property of Roxtec International AB and is protected by copyright.

This document was generated on: 2024-09-27